

---

# ***INTERMOT - ADVANCED - MOTORS***

## ***IAM SERIES***

---

### ***H4 MODEL***

---

***IAM 700-800-850-900***  
***1000-1100-1200***  
***1250-1400 H4***

***IAM 700/C-800/C H4***

***IAM 800/B45 H4***

***IAM 700-800-900***  
***1000-1100-1250/S H4***

***IAM 700-800-900***  
***1000-1100-1250/GM4 H4***

---

## ***INDEX***

---

TECHNICAL DATA - - - - -	<i>Pag.</i>	54
IAM H4 700-800-850-900-1000-1100-1200-1250-1400 - - - - -	"	55
IAM H4 700/C-800/C - - - - -	"	56
IAM H4 800/B45 - - - - -	"	57
IAM H4 700-800-900-1000-1100-1250/S - - - - -	"	58
IAM H4 700-800-900-1000-1100-1250/GM4- - - - -	"	59
ORDERING INSTRUCTIONS - - - - -	"	60
GRAPHIC PERFORMANCES H4 700-800-850-900 - - - - -	"	61
GRAPHIC PERFORMANCES H4 1000-1100-1200-1250 - - - - -	"	62
GRAPHIC PERFORMANCES H4 1400 - - - - -	"	63

---

# TECHNICAL DATA

# H4

MODEL		IAM 700 H4	IAM 800 H4	IAM 850 H4	IAM 900 H4	IAM 1000 H4	IAM 1100 H4	IAM 1200 H4	IAM 1250 H4	IAM 1400 H4
Displacement	cc/rev	714	792	847	904	992	1116	1192	1247	1332
Specific Torque	Nm/bar	11.4	12.6	13.5	14.4	15.8	17.8	19.0	19.8	21.2
Max cont. Pressure	bar	250	250	250	250	250	250	250	250	250
Max int. Pressure	bar	300	300	300	300	300	300	300	300	300
Peak pressure	bar	350	350	350	350	350	350	350	350	350
Max continuous speed	rpm	500	450	450	450	330	330	300	250	200
Peak speed	rpm	580	530	530	530	400	400	350	300	250
Max continuous power	HP	75	75	75	75	75	75	75	75	75
	kW	55	55	55	55	55	55	55	55	55
Max power	HP	107	107	107	107	107	107	107	107	107
	kW	80	80	80	80	80	80	80	80	80

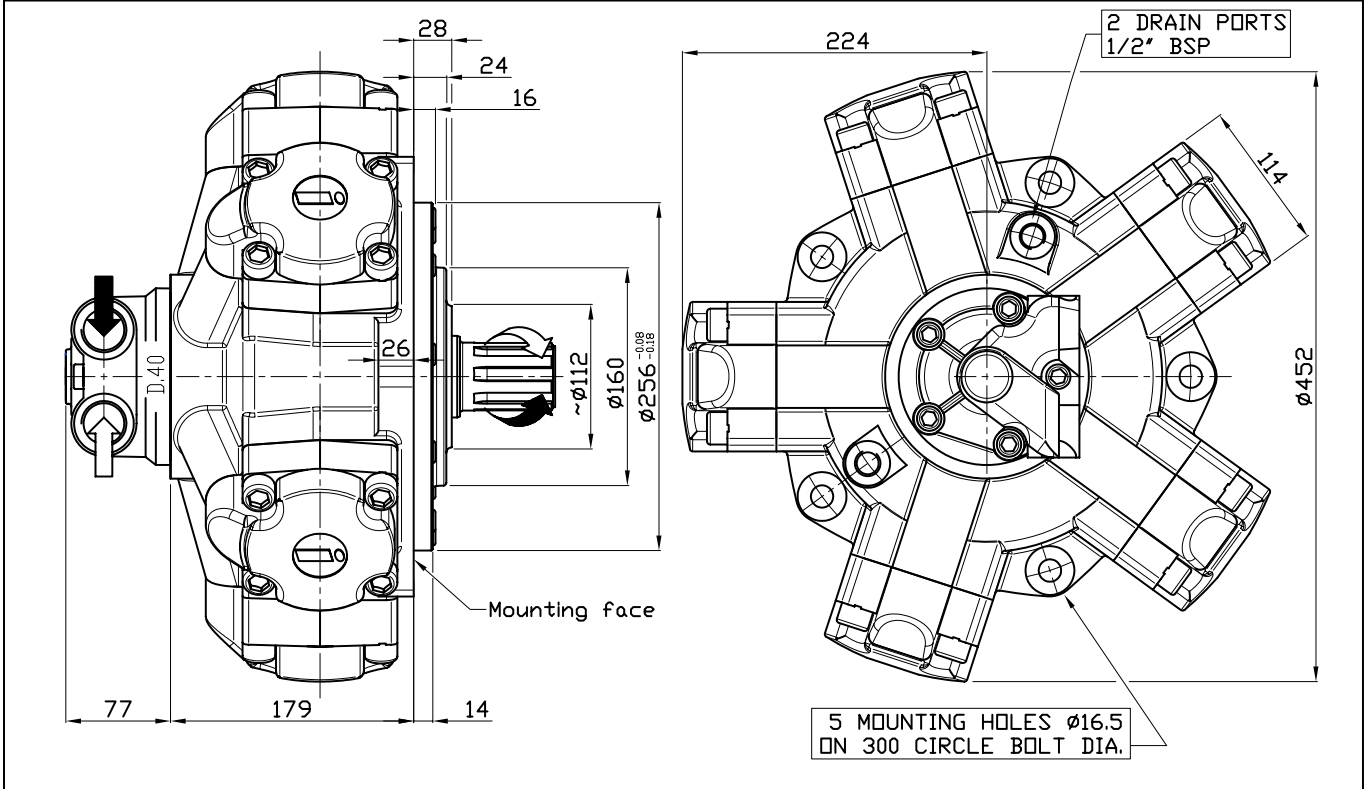
- N° of pistons: 5
- Max case pressure: 6 bar
- Max back pressure: 70 bar
- Dry weight: 92 kg
- Temperature range: -30°C ÷ +70°C
- Minimum speed: 1 rpm
- Flushing flow<sup>(\*)</sup>:
 

IAM H4 700 – 800 – 850 – 900	10 l/min
IAM H4 1000 – 1100 – 1200 – 1250	10 l/min

(\*)for further details regarding flushing go to page 10 of this catalogue.

## SIZE

### IAM 700-800-850-900-1000-1100-1200-1250-1400 H4



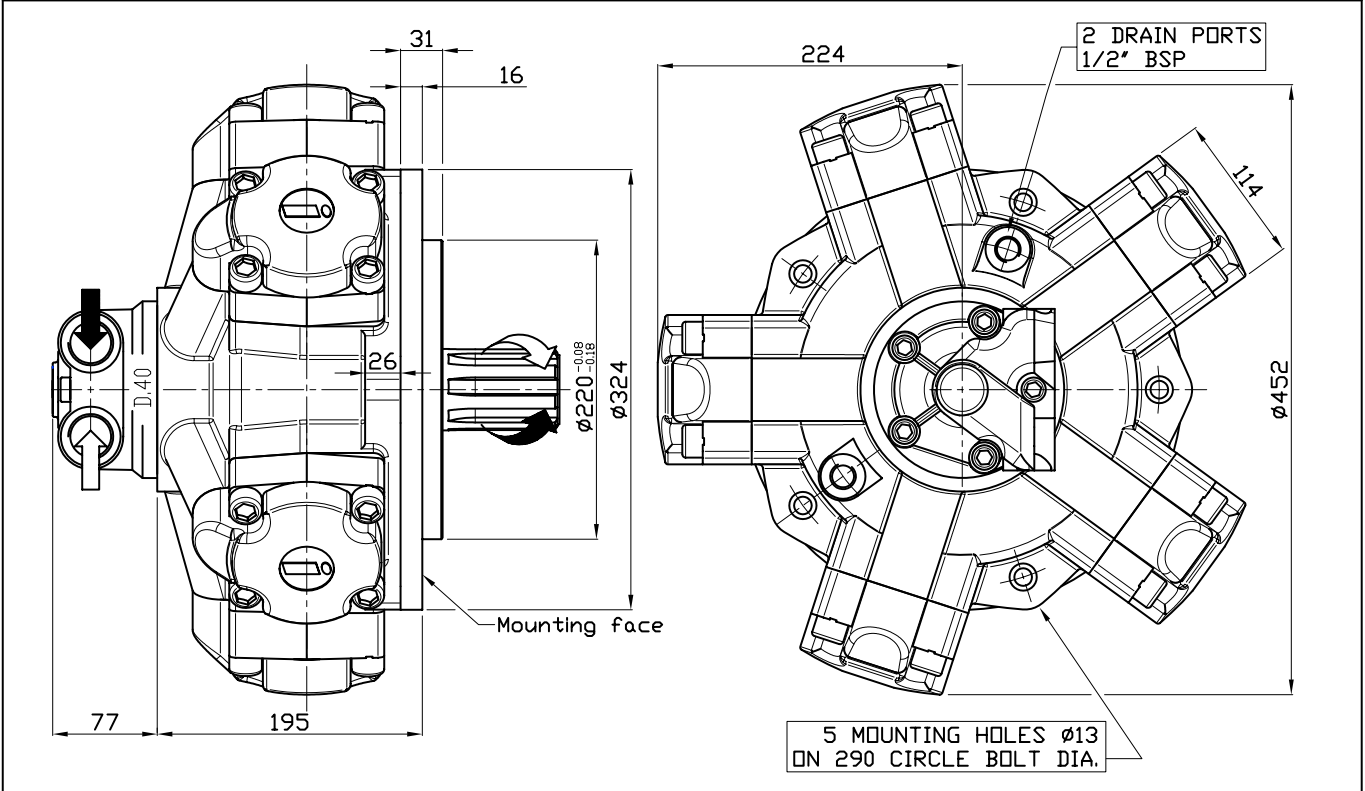
## SHAFT

### IAM 700-800-850-900-1000-1100-1200-1250-1400 H4

A0: Standard splined shaft	A1: Splined shaft on request
<p>Technical drawing of standard splined shaft A0. Dimensions: 104, 70, 50, 16x30, 50x46 UNI220 Z=8. Mounting face is indicated.</p>	<p>Technical drawing of splined shaft A1. Dimensions: 124, 90, 65, 16x30, 54x46 UNI221 Z=8. Mounting face is indicated.</p>
A2: Parallel shaft on request	A3: Female shaft on request
<p>Technical drawing of parallel shaft A2. Dimensions: 104, 60, 14, 16x30, 50±0.01, 53.8. Mounting face is indicated.</p>	<p>Technical drawing of female shaft A3. Dimensions: 43, 10, 52, 53x58 DIN 5482, 75. Note: Not available for 850, 1200, 1400 cc/Rev.</p>

## SIZE

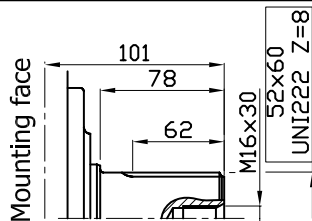
### IAM 700/C-800/C H4



## SHAFT & OPTION

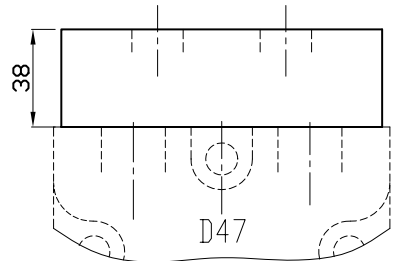
### IAM 700/C-800/C H4

A0: Standard splined shaft

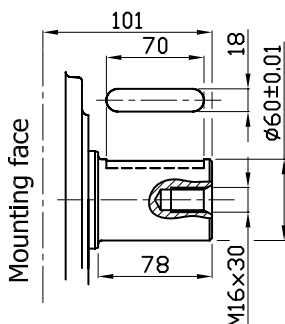


FL2: connection block

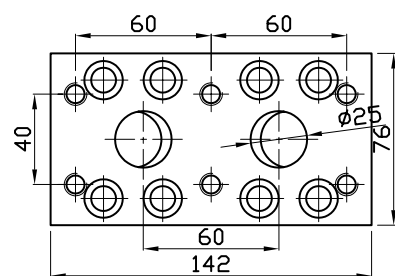
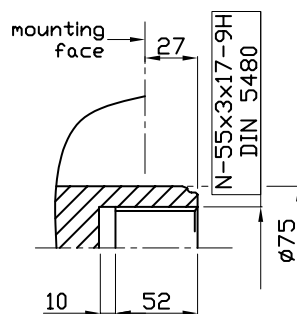
Connection block, fitting D47 distributor, for motor MR 350/450/500/600/700/800



A2: Parallel shaft  
on request

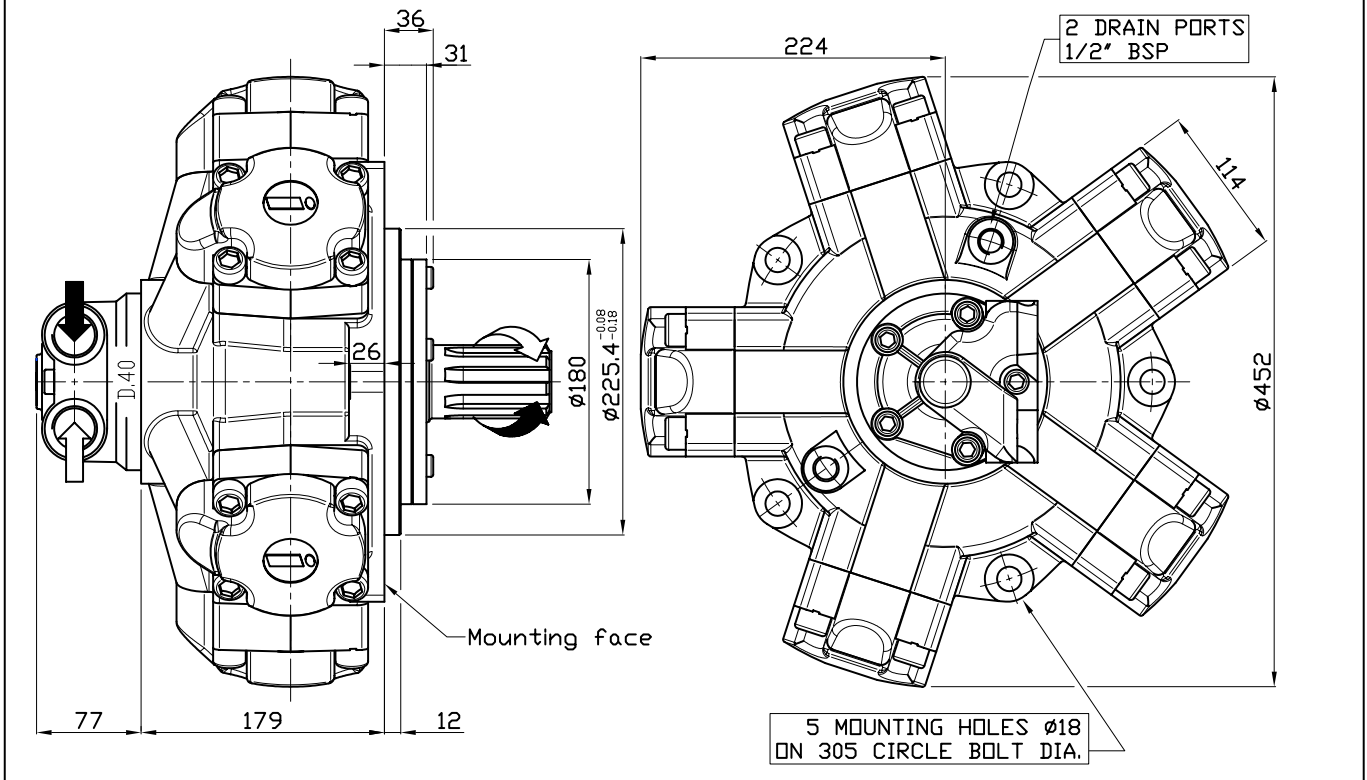


A3: Female shaft  
on request



## SIZE

### IAM 800/B45 H4



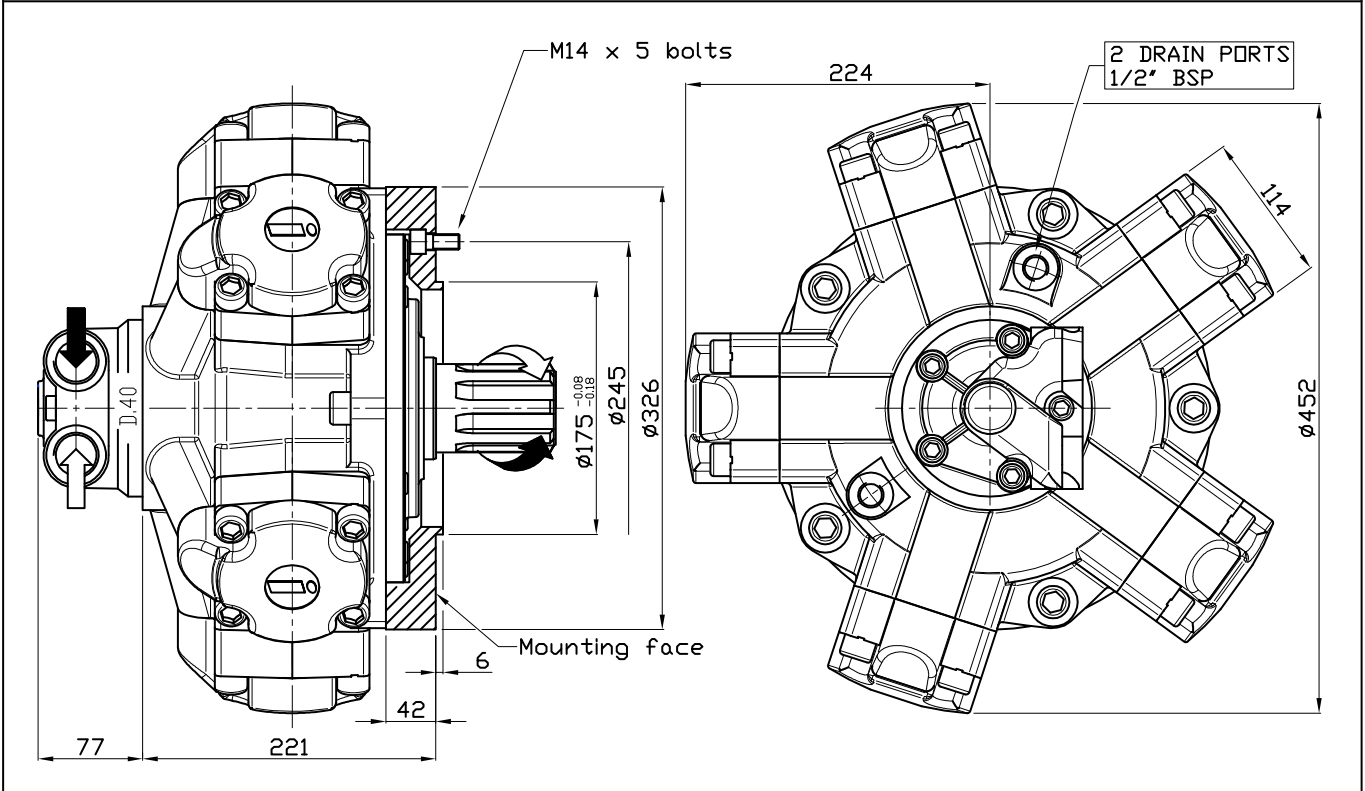
## SHAFT

### IAM 800/B45 H4

A0: Standard splined shaft	A1: Splined shaft on request
<p>Technical drawing of the standard splined shaft (A0). Dimensions include a total length of 124, a splined section length of 90, and a distance of 65 from the mounting face to the start of the splines. The shaft has an M16x30 thread and a splined section of 54x46 UNI221 Z=8.</p>	<p>Technical drawing of the splined shaft on request (A1). Dimensions include a total length of 142, a splined section length of 100, and a distance of 71 from the mounting face to the start of the splines. The shaft has a 1/2"-20 UNF 2B thread, a 32 mm depth, and is specified as BS 3550-1963 P 8/16 - 17.</p>
A2: Parallel shaft on request	A4: Splined shaft on request
<p>Technical drawing of the parallel shaft on request (A2). Dimensions include a total length of 134, a splined section length of 88, and a distance of 14 from the mounting face to the start of the splines. The shaft has an M16x30 thread and a diameter of <math>\phi 55 \pm 0.01</math>. The mounting face diameter is 58.8.</p>	<p>Technical drawing of the splined shaft on request (A4). Dimensions include a total length of 142, a splined section length of 100, and a distance of 71 from the mounting face to the start of the splines. The shaft has a 1/2"-20 UNF 2B thread, a 32 mm depth, and is specified as W 55x3x17-7h DIN 5480.</p>

## SIZE

IAM 700/S 800/S 900/S 1000/S 1100/S 1250/S H4

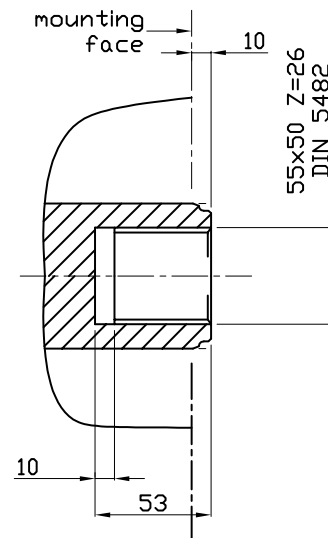
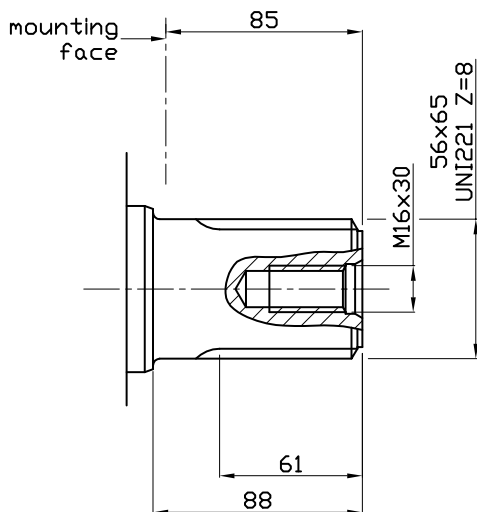


## SHAFT

IAM 700/S 800/S 900/S 1000/S 1100/S 1250/S H4

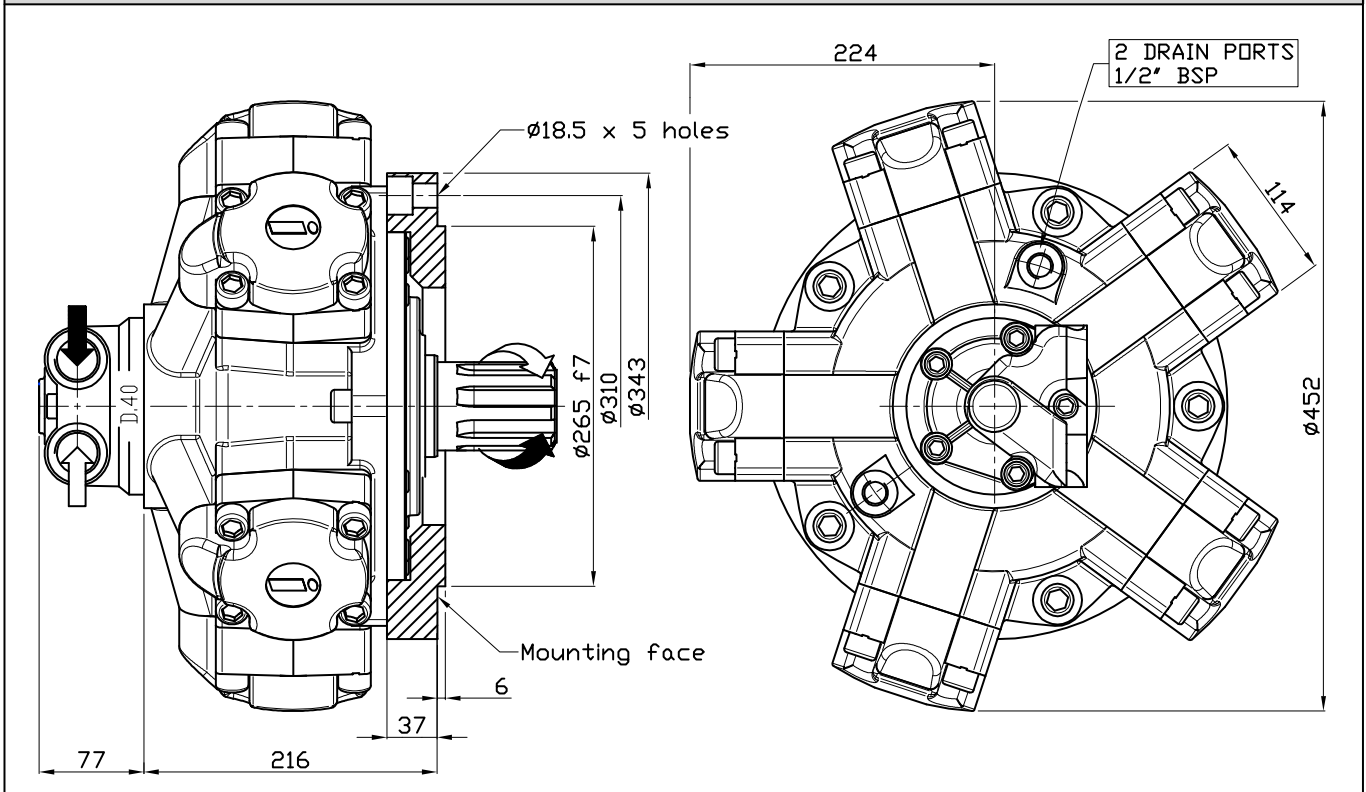
A0: Standard splined shaft

A3: Female shaft on request



## SIZE

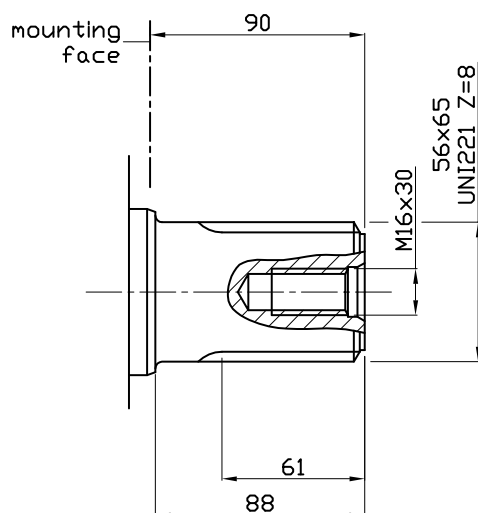
IAM 700/GM4 800/GM4 900/GM4 1000/GM4 1100/GM4 1250/GM4 H4



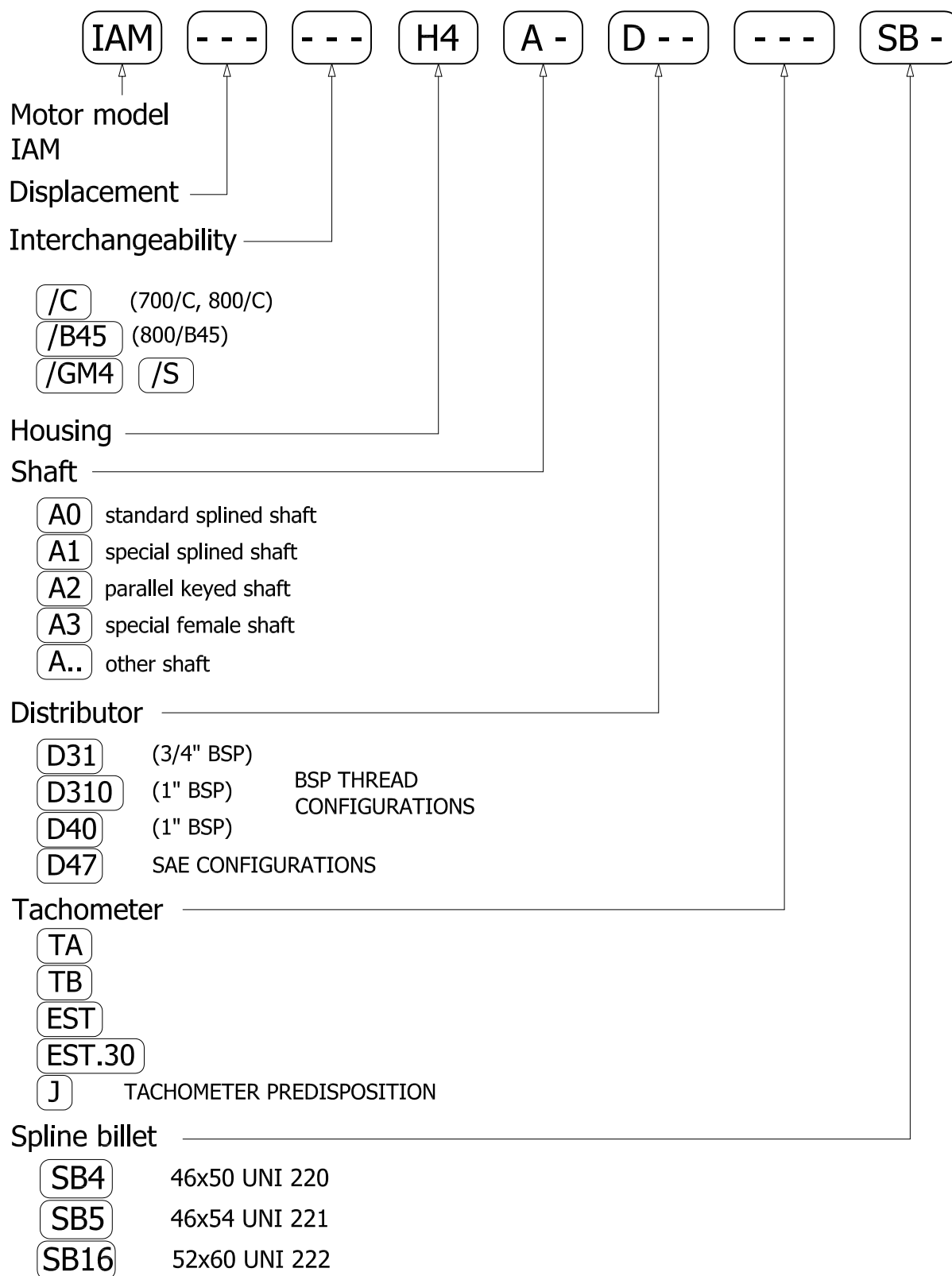
## SHAFT

IAM 700/GM4 800/GM4 900/GM4 1000/GM4 1100/GM4 1250/GM4 H4

A0: Standard splined shaft

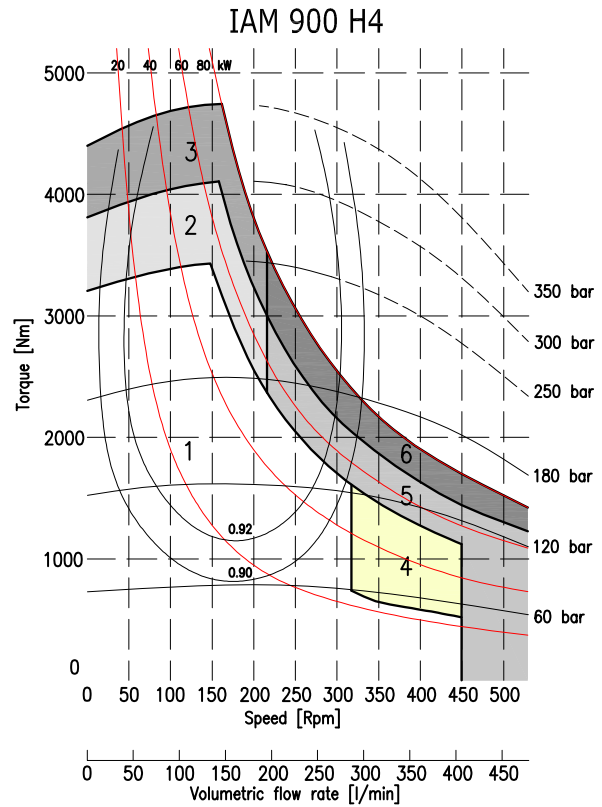
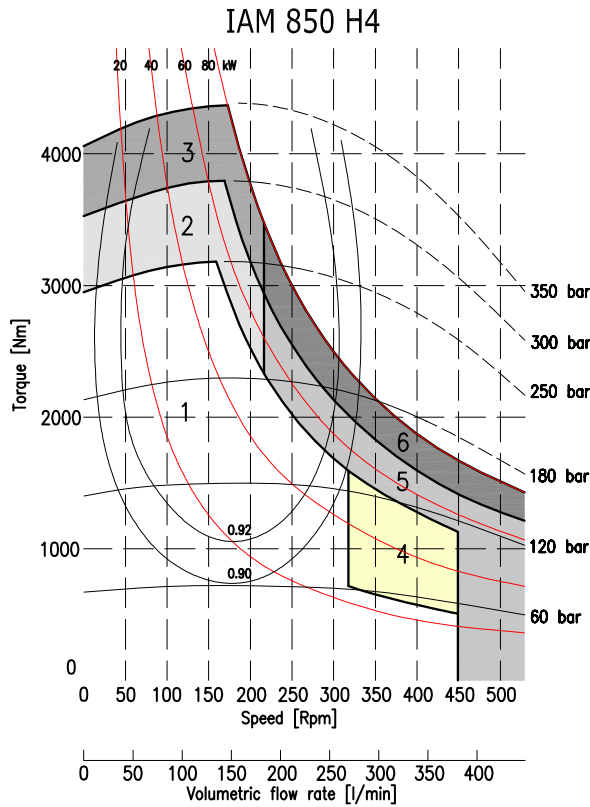
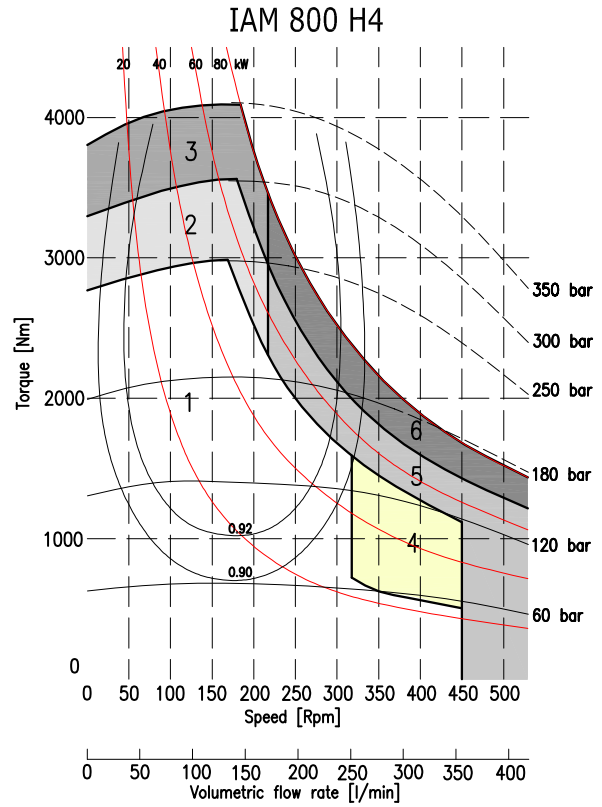
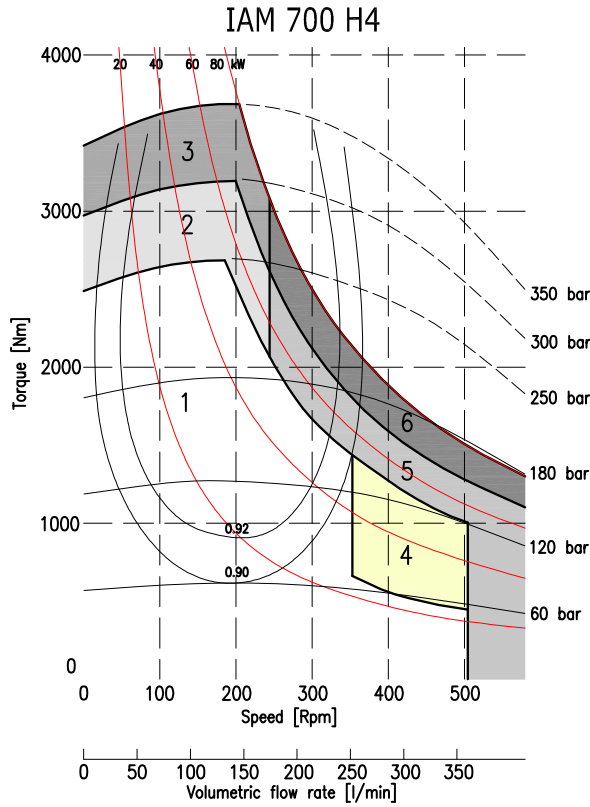


## ORDERING INSTRUCTIONS



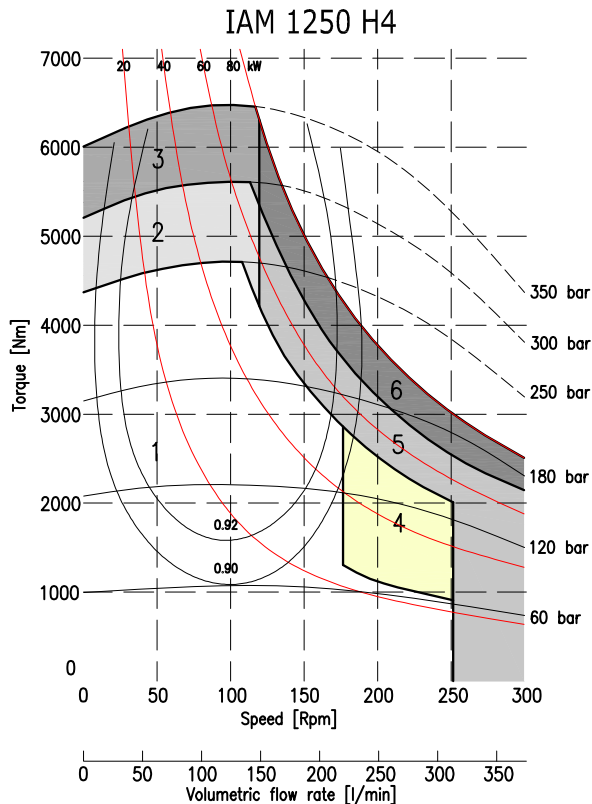
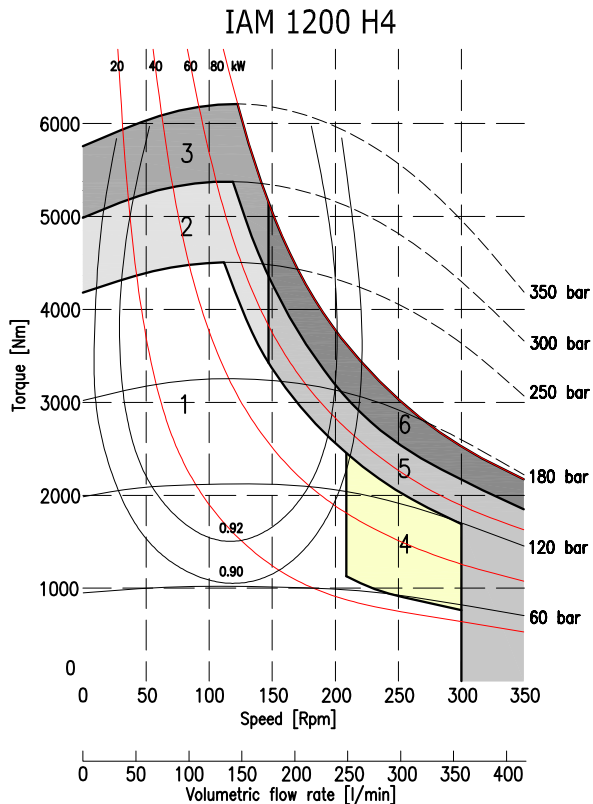
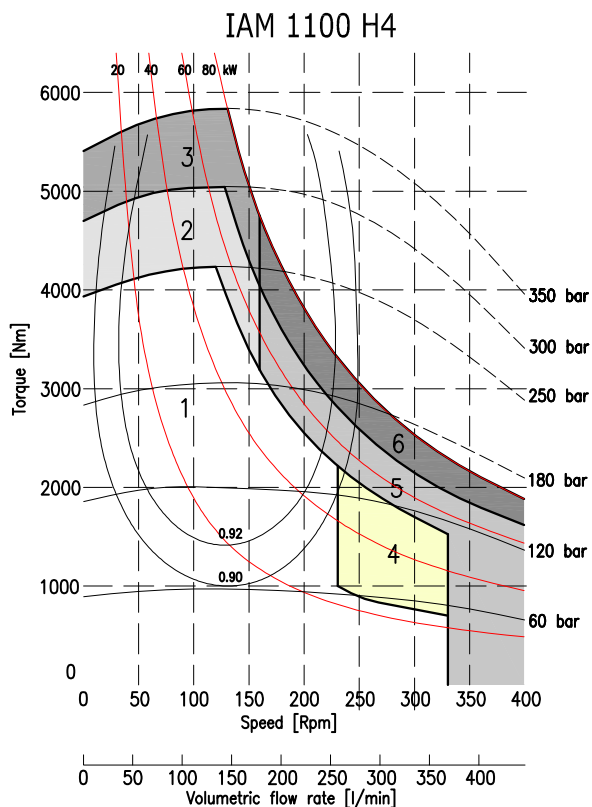
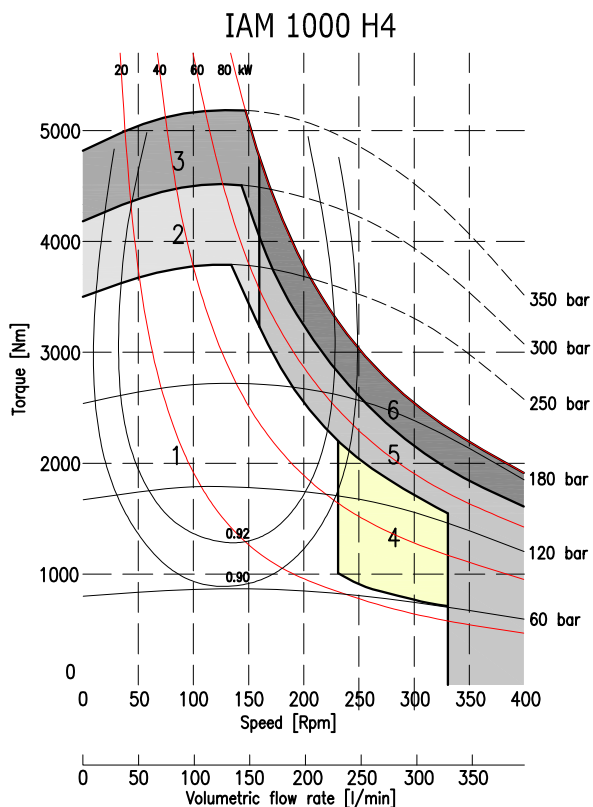
**EXAMPLE:** IAM.700.H4.A1.D40.SB5  
IAM.800/B45.H4.A1.D31.TA  
IAM.700/C.H4.A0.D40.J.SB16





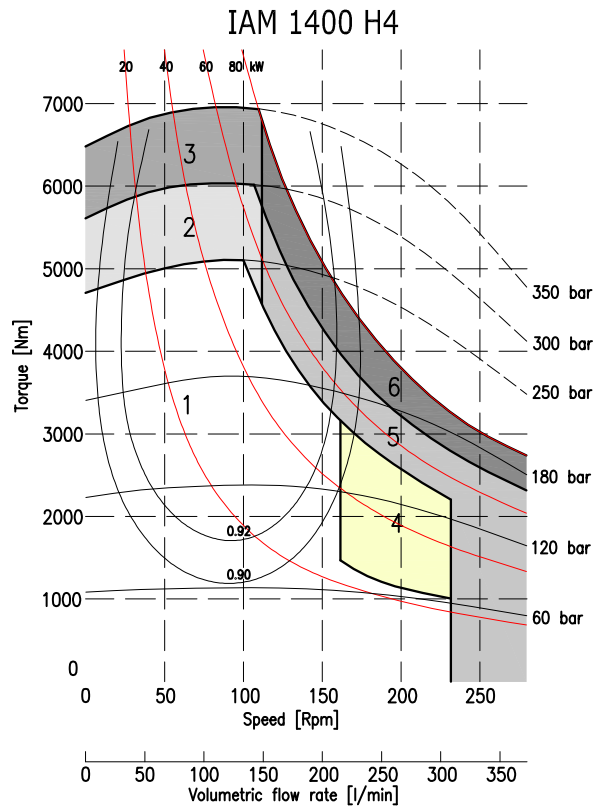
1	Continuous operation
2	Intermittent operation for period 3-5 minutes every 10-15 minutes
3	Intermittent operation for very short period (3-5 seconds every 10-15 minutes)

4	Continuous operation with flushing
5	Intermittent operation for period 3-5 minutes every 10-15 minutes with flushing
6	Intermittent operation for very short period (3-5 seconds every 10-15 minutes) with flushing



1	Continuous operation
2	Intermittent operation for period 3-5 minutes every 10-15 minutes
3	Intermittent operation for very short period (3-5 seconds every 10-15 minutes)

4	Continuous operation with flushing
5	Intermittent operation for period 3-5 minutes every 10-15 minutes with flushing
6	Intermittent operation for very short period (3-5 seconds every 10-15 minutes) with flushing



1	Continuous operation
2	Intermittent operation for period 3-5 minutes every 10-15 minutes
3	Intermittent operation for very short period (3-5 seconds every 10-15 minutes)

4	Continuous operation with flushing
5	Intermittent operation for period 3-5 minutes every 10-15 minutes with flushing
6	Intermittent operation for very short period (3-5 seconds every 10-15 minutes) with flushing